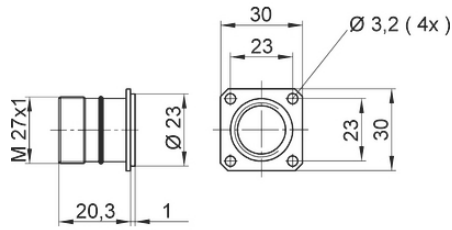


EPIC® SIGNAL R 3.0 A

, 21- , 26- 가

EPIC® R3.0 26

Made in Germany



ETIM 5:

ETIM 5.0 Class-ID: EC002635

ETIM 5.0 class : ()

ETIM 6:

ETIM 6.0 Class-ID: EC002635

ETIM 6.0 Class : ()

(V):

24V AC / 60VDC

:

1.5 kV

(24.04.2024)

©2024 Lapp Group - all rights reserved.

<http://lappkorea.lappgroup.com>

data sheet

PN 0456 / 02_03.16

EPIC® SIGNAL R 3.0 A

(A):	7.5 A
:	< 3 mOhm
:	,
/ :	21- / 26-
:	: 1.0 mm ²
:	:
:	: 가
:	:
가:	IP 67 (,)
:	500
:	-40°C to +100°C, short-term up to +125°C

가 VAT 가 가 .



EPIC® SIGNAL R 3.0 A

	Article	Version					/ PU
R 3.0 A							
00008747	SIGNAL R 3.0 A		1 - 21	E-Part	N	Ø 3.2 mm (4x)	5
00008825	SIGNAL R 3.0 A		1 - 26	E-Part	N	Ø 3.2 mm (4x)	5
00008867	SIGNAL R 3.0 A		1 - 21	P-Part	N	Ø 3.2 mm (4x)	5
00008746	SIGNAL R 3.0 A		1 - 26	P-Part	N	Ø 3.2 mm (4x)	5

(24.04.2024)

©2024 Lapp Group - all rights reserved.

<http://lappkorea.lappgroup.com>

data sheet

PN 0456 / 02_03.16