

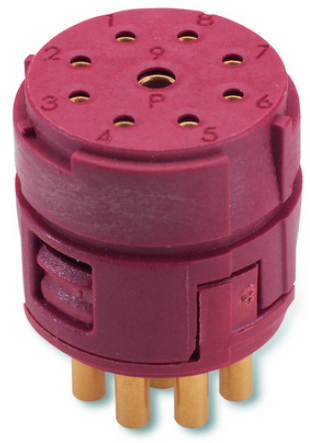
EPIC® SIGNAL M23 8+1

M23

EPIC® SIGNAL M23 M23

8+1

Made in Germany



M23

가가 .

(20.07.2024)

EPIC® SIGNAL M23 8+1

ETIM 5:	ETIM 5.0 Class-ID: EC000438
	ETIM 5.0 class :
ETIM 6:	ETIM 6.0 Class-ID: EC000438
	ETIM 6.0 Class-Description: Contact insert for industrial connectors
(V):	IEC 61984 : 150V
:	2.5 kV
(A):	20 A (2 mm)
	7 A (1 mm)
:	3
:	< 4 mOhm
:	
/ :	8 + 1
	8*1mm + 1*2mm contacts
:	: 0.14 - 1.0 mm ²
	(1.0 - 2.5 mm ² for 2-mm contact)
	: 1.0 mm ²
	(2.5 mm ² 2-mm)
:	100
VDE- :	: VDE-REG. C24(EN 61984 , DIN
	VDE 0100-410 SELV가)
	UL : E249137
:	-25°C ~+125°C

. P- ' = () , E- = () P- , E- , P-

가 VAT 가 가 .



EPIC® SIGNAL M23 8+1

	Article description				Packaging unit
8+1-	, P- =	,			
73002736	P-		-	8+1	5
73002737	P-		-	8+1	20
73002738	P-	+	9	8+1	5
73002740	P-	+	9	8+1	5
73002741	P-	+	9	8+1	20
8+1-	, E- =	,			
73002742	E-Part		-	8+1	5
73002743	E-Part		-	8+1	20
73002744	E-Part	+	9	8+1	5
73002746	E-Part	+	9	8+1	5
73002747	E-Part	+	9	8+1	20

(20.07.2024)

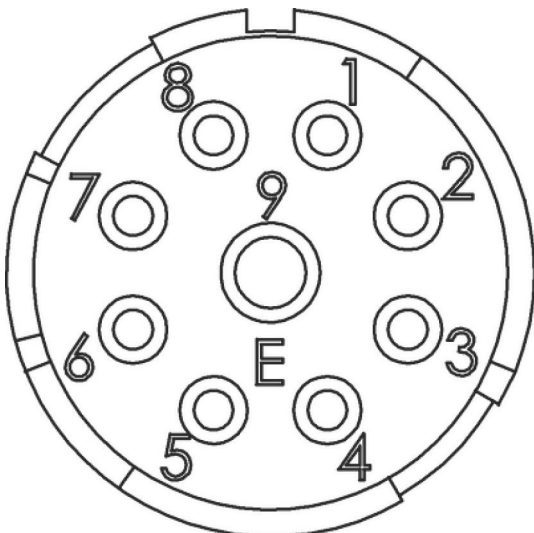
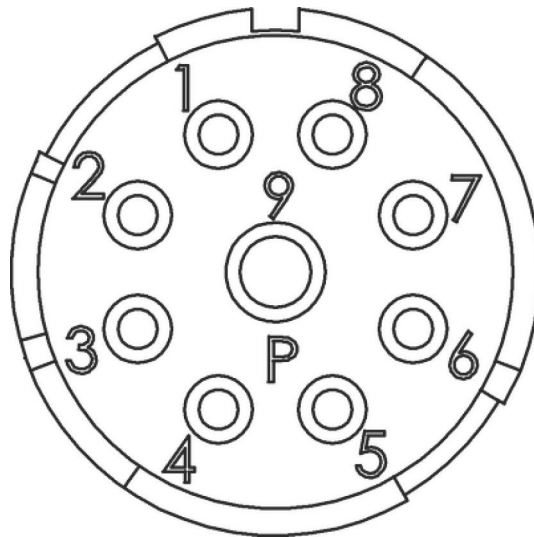
©2024 Lapp Group - all rights reserved.

<http://lappkorea.lappgroup.com>

data sheet

PN 0456 / 02_03.16

EPIC® SIGNAL M23 8+1



(20.07.2024)

©2024 Lapp Group - all rights reserved.
<http://lappkorea.lappgroup.com>

data sheet

PN 0456 / 02_03.16