

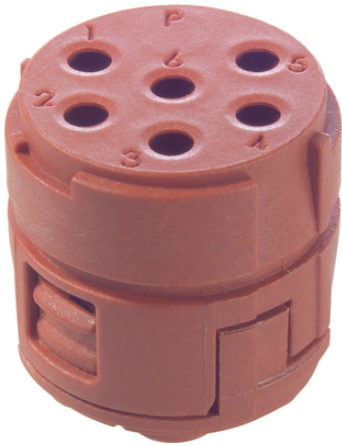
# EPIC® SIGNAL M23 6

M23

EPIC® SIGNAL M23 M23

6

Made in Germany



M23

가가 .

(20.07.2024)

# EPIC® SIGNAL M23 6

ETIM 5:

ETIM 5.0 Class-ID: EC000438

ETIM 5.0 class :

ETIM 6:

ETIM 6.0 Class-ID: EC000438

ETIM 6.0 Class-Description: Contact insert for industrial connectors

(V):

IEC 61984 : 150V

:

4 kV

(A):

18 A

:

3

:

< 4 mOhm

:

/ :

6

6\*2mm contacts

:

: 1.0 - 2.5 mm<sup>2</sup>

: 2.5 mm<sup>2</sup>

:

100

VDE-

:

: VDE-REG.

C24(EN 61984

, DIN

VDE 0100-410 SELV가

UL : E249137

:

-25°C ~+125°C

. P- ' = ( ), E- = ( P- ) , E- , P-

가 VAT 가 가 .

(20.07.2024)

©2024 Lapp Group - all rights reserved.

<http://lappkorea.lappgroup.com>

data sheet

PN 0456 / 02\_03.16



# EPIC® SIGNAL M23 6

	Article description				Packaging unit
6-	, P- =	,			
73002760	P-		-	6	5
73002761	P-		-	6	20
73002762	P-	+	,	6	5
73002763	P-	+	,	6	20
73002764	P-	+	,	6	5
73002765	P-	+	,	6	20
6-	, E- =	,			
73002766	E-Part		-	6	5
73002767	E-Part		-	6	20
73002768	E-Part	+	,	6	5
73002769	E-Part	+	,	6	20
73002770	E-Part	+	,	6	5

(20.07.2024)

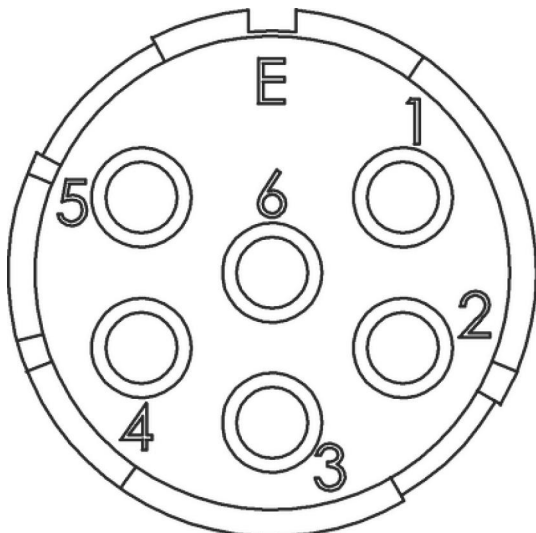
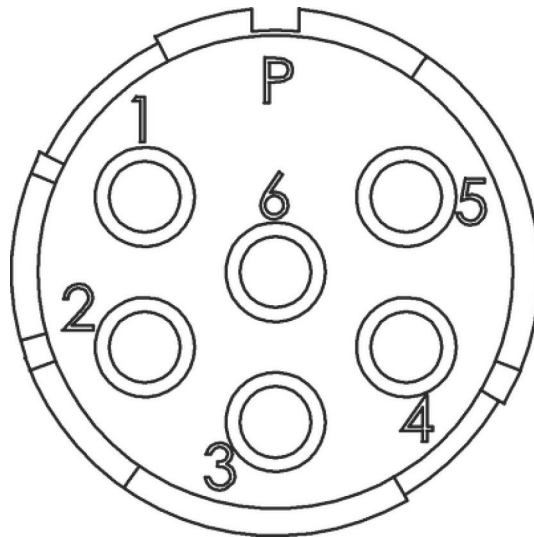
©2024 Lapp Group - all rights reserved.

<http://lappkorea.lappgroup.com>

data sheet

PN 0456 / 02\_03.16

EPIC® SIGNAL M23 6



(20.07.2024)