

EPIC® SIGNAL M23 17 PCB

M23

EPIC® Einsätze 17-way

PCB

A1, B1, B2 가

Made in Germany



CE UK CA



PCB

B1/B2 M23

(20.07.2024)

EPIC® SIGNAL M23 17 PCB

ETIM 5:	ETIM 5.0 Class-ID: EC000438
	ETIM 5.0 class :
ETIM 6:	ETIM 6.0 Class-ID: EC000438
	ETIM 6.0 Class-Description: Contact insert for industrial connectors
(V):	IEC 61984 : 50V
:	0,8 kV
(A):	7 A
:	3
:	< 4 mOhm
:	
/ :	17
	17*1mm PCB-solder contacts
:	PCB Ø 1.0 mm. B1/B2
	: 4 mm
:	100
:	-25°C ~+125°C

가 VAT 가 가 . P- = (), E- = (P-), E- , P-



EPIC® SIGNAL M23 17 PCB

	Article description				Packaging unit
17-	, P- = ()				
44420160	P-	+ , PCB	17	17	5
44420161	P-	+ , PCB	17	17	5
17-	, E- = ()				
44420162	E-Part	+ , PCB	17	17	5
44420163	E-Part	+ , PCB	17	17	5

(20.07.2024)

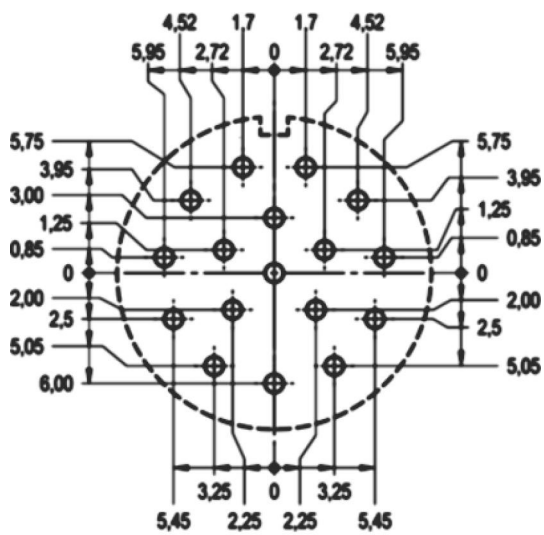
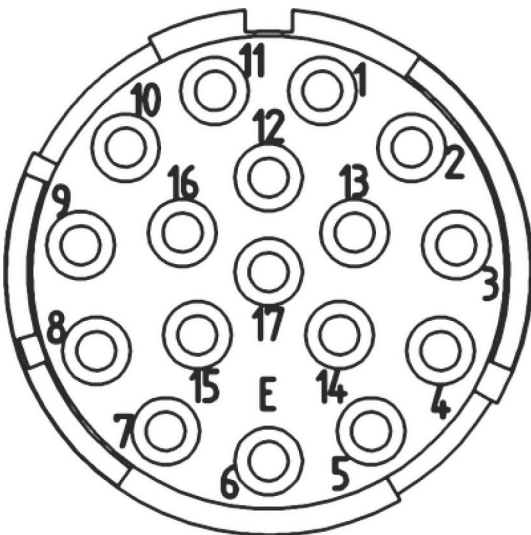
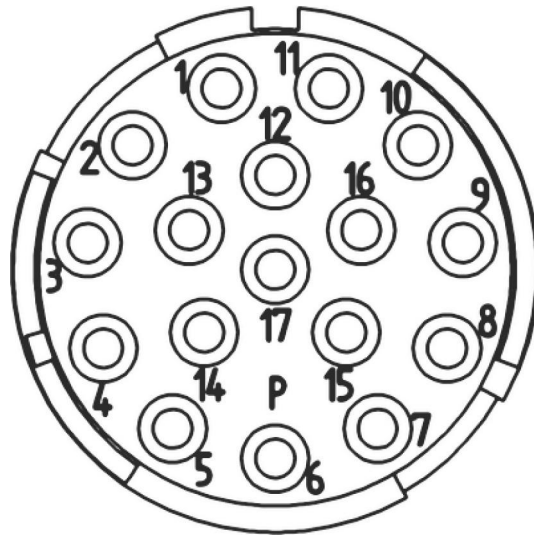
©2024 Lapp Group - all rights reserved.

<http://lappkorea.lappgroup.com>

data sheet

PN 0456 / 02_03.16

EPIC® SIGNAL M23 17 PCB



(20.07.2024)