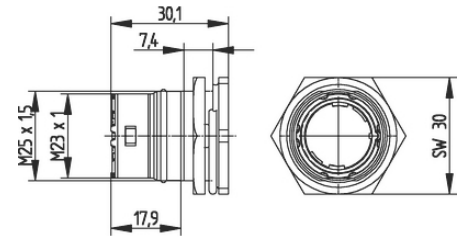
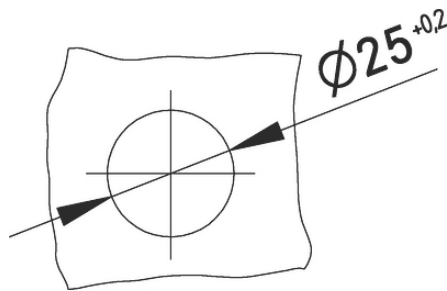


# EPIC® SIGNAL M23 G6

Servo

EPIC® M23

Made in Germany



M25

(24.04.2024)

# EPIC® SIGNAL M23 G6

ETIM 5:

ETIM 5.0 Class-ID: EC000437

ETIM 5.0 class :

ETIM 6:

ETIM 6.0 Class-ID: EC000437

ETIM 6.0 Class-Description: Housing for industrial connectors

:

: - -

: FPM

가:

IP68 (10h/1m)

VDE- :

: VDE-REG. C24(EN 61984 , DIN

VDE 0100-410 SELV가 )

UL : E249137

:

-25°C ~+125°C

가 VAT 가 가 .

(24.04.2024)

©2024 Lapp Group - all rights reserved.

<http://lappkorea.lappgroup.com>

data sheet

PN 0456 / 02\_03.16



## EPIC® SIGNAL M23 G6

	Article			/ PU
	M23 G6	-	,	
44420071	M23 G6	(N)	M25 x 1.5 (with nut)	5
44420073	M23 G6	(N)	M25 x 1.5 (with nut)	20

(24.04.2024)

©2024 Lapp Group - all rights reserved.

<http://lappkorea.lappgroup.com>

data sheet

PN 0456 / 02\_03.16