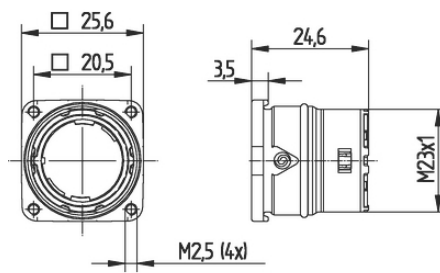


EPIC® SIGNAL M23 B1

Servo

EPIC® M23

Made in Germany



가

가

(24.04.2024)

©2024 Lapp Group - all rights reserved.

<http://lappkorea.lappgroup.com>

data sheet

PN 0456 / 02_03.16

EPIC® SIGNAL M23 B1

ETIM 5:	ETIM 5.0 Class-ID: EC000437
	ETIM 5.0 class :
ETIM 6:	ETIM 6.0 Class-ID: EC000437
	ETIM 6.0 Class-Description: Housing for industrial connectors
:	: - -
	: FPM
가:	IP68 (10h/1m)
VDE- :	: VDE-REG. C24(EN 61984 , DIN
	VDE 0100-410 SELV가)
	UL : E249137
:	-25°C ~+125°C

가 VAT 가 가 .

(24.04.2024)



EPIC® SIGNAL M23 B1

	Article			/ PU
	M23 B1	-	,	
44420024	M23 B1	(N)	M2.5 (4x)	5
44420023	M23 B1	(N)	M2.5 (4x)	20
44420026	M23 B1	(+20°)	M2.5 (4x)	5

(24.04.2024)

©2024 Lapp Group - all rights reserved.

<http://lappkorea.lappgroup.com>

data sheet

PN 0456 / 02_03.16