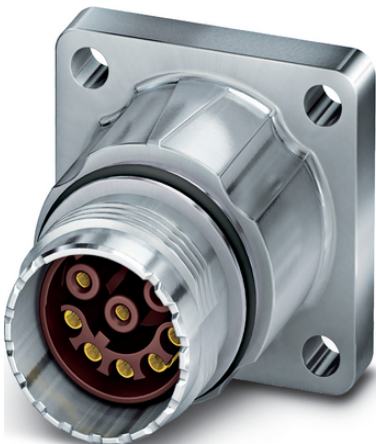


EPIC® SIGNAL M17 A1

EPIC® M17 SIGNAL

Made in Germany



/ ac
EMC

/

ETIM 5:

ETIM 5.0 Class-ID: EC002635

ETIM 5.0 class : ()

(20.07.2024)

©2024 Lapp Group - all rights reserved.

<http://lappkorea.lappgroup.com>

data sheet

PN 0456 / 02_03.16

EPIC® SIGNAL M17 A1

ETIM 6:	ETIM 6.0 Class-ID: EC002635
(V):	ETIM 6.0 Class : ()
:	IEC: 48 V AC, 74 V DC
(A):	1.5 kV
:	3.6 A
:	3
/ :	: 8(1mm), 17(0.6mm)
:	: 0.06 - 0.56mm ² (0,6mm)
:	: 0.06 - 1.0 mm ² (1mm)
:	:
가:	: PA,
:	: FPM
:	IP 67
:	100
:	-40°C +125°C

가 VAT 가 가 .



EPIC® SIGNAL M17 A1

	Article description			Packaging unit
M17 A1,				
44423110	EPIC® M17	Ø 2.7 mm (4x)	8	5
44423108	EPIC® M17	Ø 2.7 mm (4x)	8	5
44423111	EPIC® M17	Ø 2.7 mm (4x)	17	5
44423109	EPIC® M17	Ø 2.7 mm (4x)	17	5

(20.07.2024)

©2024 Lapp Group - all rights reserved.

<http://lappkorea.lappgroup.com>

data sheet

PN 0456 / 02_03.16