

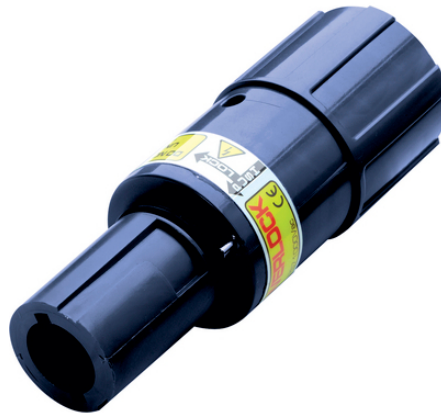
EPIC® POWERLOCK F6 C

EPIC®POWERLOCK

660A

240mm²

Made in Europe



가

ex)

(22.07.2024)

©2024 Lapp Group - all rights reserved.

<http://lappkorea.lappgroup.com>

data sheet

PN 0456 / 02_03.16

EPIC® POWERLOCK F6 C

M40 가
SKINTOP® ST-M 40 STR-M 40

가

ETIM 5:

ETIM 5.0 Class-ID: EC000437

ETIM 5.0 class :

ETIM 6:

ETIM 6.0 Class-ID: EC000437

ETIM 6.0 Class-Description: Housing for industrial connectors

(V):

1000V

:

8 kV

(A):

660 A

:

3

:

Crimp termination:

/ :

1

:

: 35 - 240 mm²

:

: PBT

: PA

가:

IP 67 (,)

IP 20 ()

:

500

VDE- :

VDE D42

:

-25°C ~+125°C

가 VAT 가 가 .

(22.07.2024)

©2024 Lapp Group - all rights reserved.

<http://lappkorea.lappgroup.com>

data sheet

PN 0456 / 02_03.16



EPIC® POWERLOCK F6 C

	Article description	M		Packaging unit
44420211	POWERLOCK F6 PE/GN	40	PE,	1
44420212	POWERLOCK F6 N/BL	40	N,	1
44420213	POWERLOCK F6 L1/BN	40	L1,	1
44420214	POWERLOCK F6 L2/BK	40	L2,	1
44420215	POWERLOCK F6 L3/GY	40	L3,	1
L2/	L1/			
44420318	POWERLOCK F6 L1/RD	40	L1,	1

(22.07.2024)

©2024 Lapp Group - all rights reserved.

<http://lappkorea.lappgroup.com>

data sheet

PN 0456 / 02_03.16

EPIC® POWERLOCK F6 C



(22.07.2024)

EPIC® POWERLOCK F6 C



(22.07.2024)

©2024 Lapp Group - all rights reserved.
<http://lappkorea.lappgroup.com>

data sheet

PN 0456 / 02_03.16