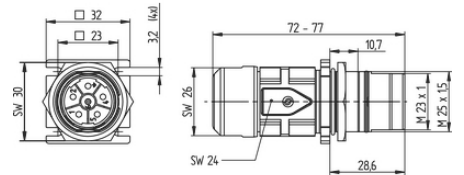


# EPIC® POWER LS1 F7

EPIC® LS1 Power cable coupler with flange for cable extensions for wall mounting

Made in Germany



(22.07.2024)

# EPIC® POWER LS1 F7



SKINTOP®



EMC

ETIM 5:	ETIM 5.0 Class-ID: EC002635
	ETIM 5.0 class : ( )
ETIM 6:	ETIM 6.0 Class-ID: EC002635
	ETIM 6.0 Class : ( )
(V):	630 V (2 mm )
	250 V (1 mm )
:	6 kV (2 mm )
	4 kV (1 mm )
(A):	26A/3+PE+4, 25A/5+PE(2mm )
	7 A (1 mm )
:	3
:	< 4 mOhm
:	
/ :	3+PE+4(2mm/1mm)
	5+PE(2mm)
:	: 0.5 - 4.0 mm <sup>2</sup> (2 mm contacts)
	: 0.14 - 1.0 mm <sup>2</sup> (1 mm contacts)
:	:
	: PA,
	: FPM

(22.07.2024)



# EPIC® POWER LS1 F7

가:	IP68 (10h/1m)
:	500
VDE- :	UL : E249137
:	-25°C ~+125°C

가 VAT 가 가 .

(22.07.2024)

EPIC® POWER LS1 F7

	Article description		Clamping range min	Clamping range max	Clamping range in mm			Packaging unit
LS1 F7, ( ), 6 ,								
73000020	LS1 F7	6	8.5	11	8.5 - 11	Ø 3.2 mm (4x), M25 x 1.5 (with nut)	5+PE	5
73000021	LS1 F7	6	10.5	15.5	10.5 - 15.5	Ø 3.2 mm (4x), M25 x 1.5 (with nut)	5+PE	5
76143000	LS1 F7	6	7.5	15.5	7.5 - 15.5	Ø 3.2 mm (4x), M25 x 1.5 (with nut)	5+PE	5
LS1 F7, 8- :								
73000016	LS1 F7	8	8.5	11	8.5 - 11	Ø 3.2 mm (4x), M25 x 1.5 (with nut)	3+PE+4	5
73000017	LS1 F7	8	10.5	15.5	10.5 - 15.5	Ø 3.2 mm (4x), M25 x 1.5 (with nut)	3+PE+4	5

(22.07.2024)

©2024 Lapp Group - all rights reserved.

<http://lappkorea.lappgroup.com>

data sheet

PN 0456 / 02\_03.16