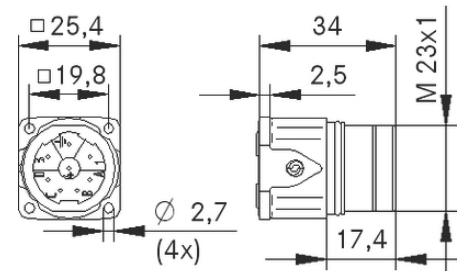
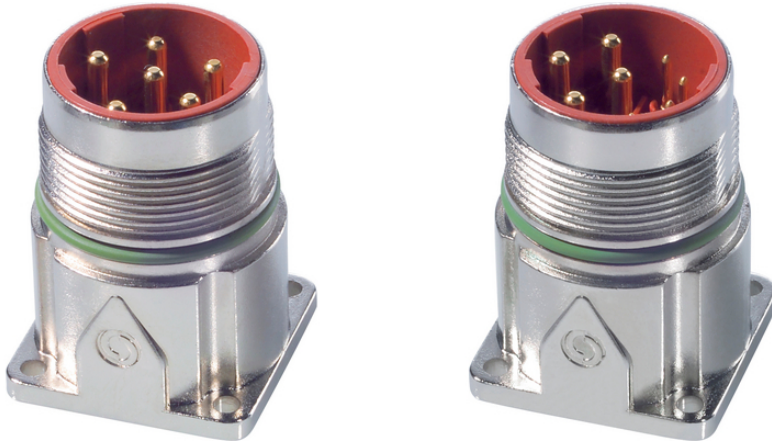


EPIC® POWER LS1 A1

EPIC® LS1

Made in Germany



(22.07.2024)

EPIC® POWER LS1 A1



EMC

ETIM 5:	ETIM 5.0 Class-ID: EC002635
	ETIM 5.0 class : ()
ETIM 6:	ETIM 6.0 Class-ID: EC002635
	ETIM 6.0 Class : ()
(V):	630 V (2 mm) 250 V (1 mm)
:	6 kV (2 mm) 4 kV (1 mm)
(A):	26A/3+PE+4, 25A/5+PE(2mm) 7 A (1 mm)
:	3
:	< 4 mOhm
:	
/ :	3+PE+4(2mm/1mm) 5+PE(2mm)
:	: 0.5 - 2.5 mm ² (2 mm contacts) : 0.14 - 1.0 mm ² (1 mm contacts)
:	:
:	: PA, : FPM
가:	IP68 (10h/1m)
:	500
VDE- :	: VDE-REG. B25
:	UL : E249137
:	-25°C ~+125°C

(22.07.2024)



EPIC® POWER LS1 A1

가 VAT 가 가 .

(22.07.2024)



EPIC® POWER LS1 A1

	Article description		Clamping range in mm			Packaging unit
LS1 A1, , 6 ,						
76003000	LS1 A1	6	-	Ø 2.7 mm (4x)	5+PE	5
76003510	LS1 A1	-	-	Ø 2.7 mm (4x)	5+PE	20
LS1 A1, , 8 ,						
76004000	LS1 A1	8	-	Ø 2.7 mm (4x)	3+PE+4	5
76004510	LS1 A1	-	-	Ø 2.7 mm (4x)	3+PE+4	20

(22.07.2024)

©2024 Lapp Group - all rights reserved.

<http://lappkorea.lappgroup.com>

data sheet

PN 0456 / 02_03.16