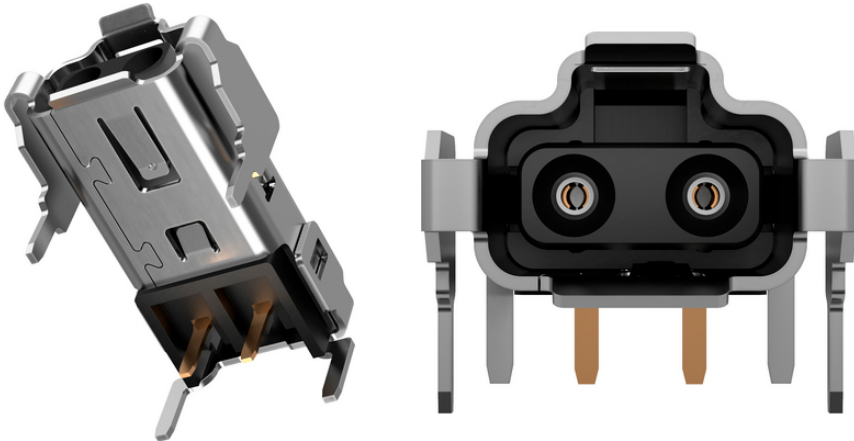


## EPIC® DATA SPE Connectors

The compact Single Pair Ethernet circuit board socket is used to connect SPE connectors to a PCB. In addition to the data supply, the socket also enables a power supply of up to 50 watts for terminal devices thanks to the Power over Data Line. The connector face complies with the DIN EN IEC 63171-6 standard.

PCB



Lapp



Fast information exchange thanks to future-proof Single Pair Ethernet (SPE) technology for a consistent and uniform network infrastructure right up to the field level.

Compact design for use in restricted spaces.

Connector face of the SPE connector in accordance with DIN EN IEC 63171-6.

Power-over-Data-Line (PoDL)-capable line according to IEEE 802.3bu for simultaneous power and data supply of SPE terminals with low power requirements (up to 50 W).

For connecting SPE connectors to a PCB inside active devices.

For use with the SPE connector EPIC® DATA SPE-6 FA M CS1.

For use with the SPE patch cable EPIC® DATA SPE-6 PC M-M CT001.

DIN EN IEC 63171-6

가:

IP 20

(24.04.2024)

©2024 Lapp Group - all rights reserved.

<http://lappkorea.lappgroup.com>

data sheet

PN 0456 / 02\_03.16



## EPIC® DATA SPE Connectors

가 VAT 가 가 .

(24.04.2024)

©2024 Lapp Group - all rights reserved.

<http://lappkorea.lappgroup.com>

data sheet

PN 0456 / 02\_03.16



## EPIC® DATA SPE Connectors

21700866
----------

(24.04.2024)

©2024 Lapp Group - all rights reserved.

<http://lappkorea.lappgroup.com>

data sheet

PN 0456 / 02\_03.16