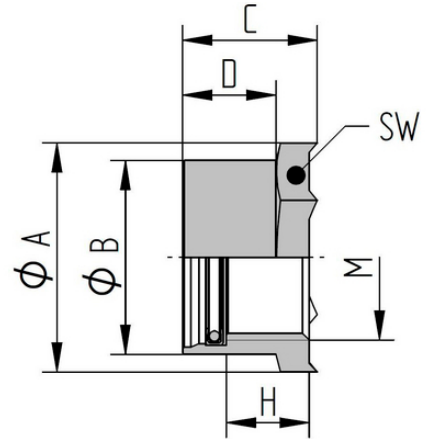
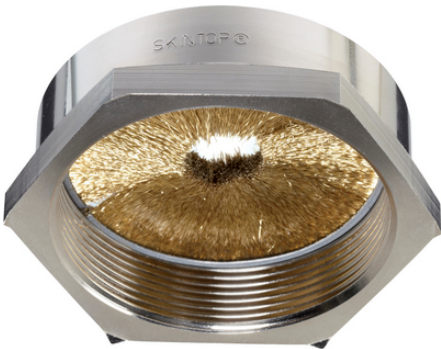


# SKINTOP® BRUSH ADD-ON

SKINTOP® BRUSH ADD-ON, 가 가 EMC

EMC 가 SKINTOP®ST(R)-M

Active EMC lock-nut



360°

EMC

가 ,

EMC  
EMC-

(24.04.2024)



# SKINTOP® BRUSH ADD-ON

DIN EN 60423

DIN IEC 62444

ETIM 5:

ETIM 5.0 Class-ID: EC000441

ETIM 5.0 :

ETIM 6:

ETIM 6.0 Class-ID: EC000441

ETIM 6.0 Class :

:

T21

SKINTOP® ST-M

:

:

EMC :

:

-70°C to +200°C

가 VAT

가 가 .

(24.04.2024)

©2024 Lapp Group - all rights reserved.

<http://lappkorea.lappgroup.com>

data sheet

PN 0456 / 02\_03.16



## SKINTOP® BRUSH ADD-ON

	Article designation / size	(mm) Ø ,	SW (mm)	Thread length D mm	/ PU
54110839	M 12 x 1,5	4	24	10	25
54110840	M 16 x 1,5	4	24	10	25
54110841	M 20 x 1,5	4	24	10	10
54110842	M 25 x 1,5	5	30	10	10
54110843	M 32 x 1,5	6	39	12	10
54110844	M 40 x 1,5	10	47	12	5
54110845	M 50 x 1,5	12	56	12	5
54110846	M 63 x 1,5	16	66	12	1

(24.04.2024)

©2024 Lapp Group - all rights reserved.

<http://lappkorea.lappgroup.com>

data sheet

PN 0456 / 02\_03.16

## SKINTOP® BRUSH ADD-ON



(24.04.2024)

©2024 Lapp Group - all rights reserved.  
<http://lappkorea.lappgroup.com>

data sheet

PN 0456 / 02\_03.16