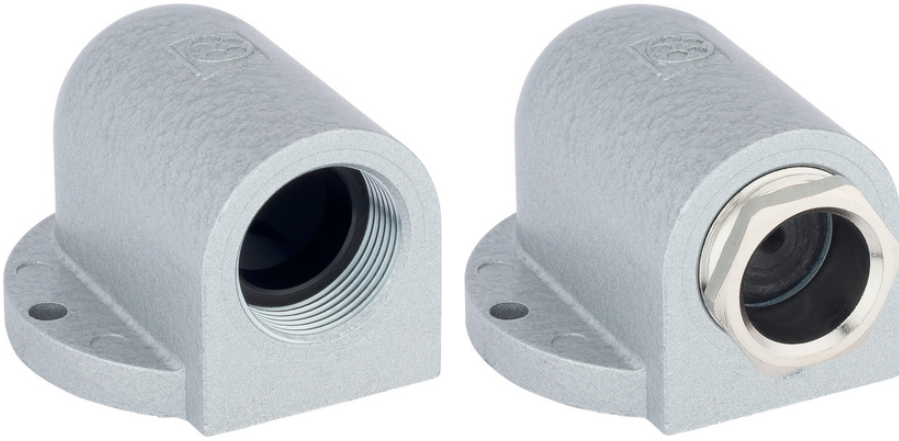


# SKINDICHT® SE

SKINDICHT® SE, , 가 ,



**CE UK  
CA**



가 PG 16 - 21  
가 PG 29 - 36

SKINDICHT® SKINTOP® , 가 SKINDICHT®  
SE .



# SKINDICHT® SE

ETIM 6:

ETIM 6.0 Class-ID: EC000441

ETIM 6.0 Class :

:

:

: CR

O- : NBR

:

가:

IP 55

:

-20°C +80°C

가 VAT

가 가 .

(23.04.2024)

©2024 Lapp Group - all rights reserved.

<http://lappkorea.lappgroup.com>

data sheet

PN 0456 / 02\_03.16



SKINDICHT® SE

	Article designation / size	ØF (mm)	SW (mm)	(mm)	(mm)	(mm)	/ PU
SKINDICHT® SE							
52004130	PG 16	8/10.5/13.5/16	22	49.2	42.0	36.0	10
52004140	PG 21	11/15/18/20	28	68.1	60.0	52.5	10
52005430	PG 29	19/23/27/31	37	83.6	66.0	54.0	5
52004150	PG 36	25/28/31/35	47	99.6	85.0	73.0	1
SKINDICHT® SE, E+D							
52024090	PG 16	-	-	42.0	42.0	36.0	10
52024100	PG 21	-	-	60.0	60.0	52.5	10
52024110	PG 29	-	-	76.0	66.0	54.0	5
52024120	PG 36	-	-	90.0	85.0	73.0	1

(23.04.2024)

©2024 Lapp Group - all rights reserved.

<http://lappkorea.lappgroup.com>

data sheet

PN 0456 / 02\_03.16