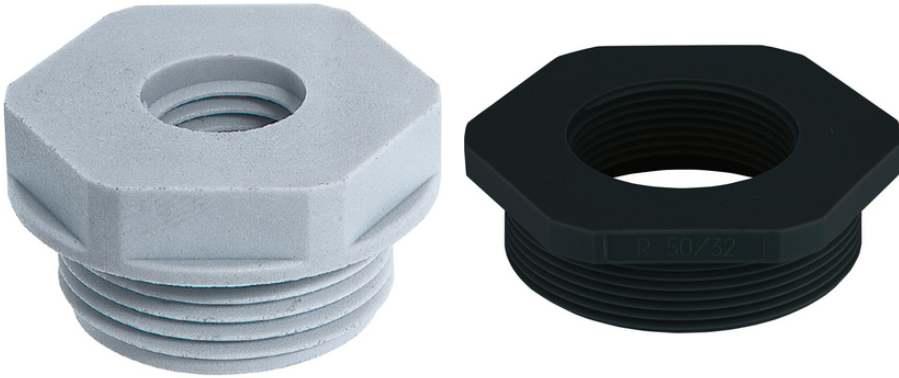


SKINDICHT® KU-M

SKINDICHT® KU-M, , 가



가

DIN EN 60423

DIN IEC 62444

ETIM 5:

ETIM 5.0 Class-ID: EC000441

ETIM 5.0 :

ETIM 6:

ETIM 6.0 Class-ID: EC000441

ETIM 6.0 Class :

(RAL 7035)

Black (RAL 9005), UV-resistant

:

,

:

-40°C ~ +100°C

(23.04.2024)

©2024 Lapp Group - all rights reserved.

<http://lappkorea.lappgroup.com>

data sheet

PN 0456 / 02_03.16



SKINDICHT® KU-M

가 VAT 가 가 .

(23.04.2024)

	(thread) , M1	(thread) , M2	SW (mm)	Thread length D mm	/ PU
SKINDICHT® KU-M 가					
52104505	16 x 1.5	12 x 1.5	22	9	100
52104470	20 x 1.5	12 x 1.5	24	9	100
52104504	20 x 1.5	16 x 1.5	24	9	100
52104472	25 x 1.5	12 x 1.5	29	10	100
52104473	25 x 1.5	16 x 1.5	29	10	100
52104474	25 x 1.5	20 x 1.5	29	10	100
52104475	32 x 1.5	12 x 1.5	36	12	50
52104476	32 x 1.5	16 x 1.5	36	12	50
52104477	32 x 1.5	20 x 1.5	36	12	50
52104478	32 x 1.5	25 x 1.5	36	12	50
52104479	40 x 1.5	16 x 1.5	46	12	50
52104480	40 x 1.5	20 x 1.5	46	12	50
52104481	40 x 1.5	25 x 1.5	46	12	25
52104482	40 x 1.5	32 x 1.5	46	12	25
52104483	50 x 1.5	20 x 1.5	55	14	5
52104484	50 x 1.5	25 x 1.5	55	14	5
52104485	50 x 1.5	32 x 1.5	55	14	5
52104486	50 x 1.5	40 x 1.5	55	14	5
52104487	63 x 1.5	25 x 1.5	68	15	5
52104488	63 x 1.5	32 x 1.5	68	15	5
52104489	63 x 1.5	40 x 1.5	68	15	5
52104469	63 x 1.5	50 x 1.5	68	15	5
SKINDICHT® KU-M					
52104541	16 x 1.5	12 x 1.5	20	8	100
52104520	20 x 1.5	12 x 1.5	24	8	100
52104521	20 x 1.5	16 x 1.5	24	9	100
52104522	25 x 1.5	12 x 1.5	29	8	100
52104523	25 x 1.5	16 x 1.5	29	8	100
52104524	25 x 1.5	20 x 1.5	30	10	100
52104526	32 x 1.5	16 x 1.5	36	10	50
52104527	32 x 1.5	20 x 1.5	36	10	50
52104528	32 x 1.5	25 x 1.5	36	11	50
52104529	40 x 1.5	16 x 1.5	46	10	50

(23.04.2024)

©2024 Lapp Group - all rights reserved.

<http://lappkorea.lappgroup.com>

data sheet

PN 0456 / 02_03_16



SKINDICHT® KU-M

	(thread) , M1	(thread) , M2	SW (mm)	Thread length D mm	/ PU
52104530	40 x 1.5	20 x 1.5	46	10	50
52104531	40 x 1.5	25 x 1.5	46	10	25
52104532	40 x 1.5	32 x 1.5	44	12	25
52104534	50 x 1.5	25 x 1.5	55	12	5
52104535	50 x 1.5	32 x 1.5	55	12	5
52104536	50 x 1.5	40 x 1.5	55	13	5
52104537	63 x 1.5	25 x 1.5	68	12	5
52104538	63 x 1.5	32 x 1.5	68	12	5
52104539	63 x 1.5	40 x 1.5	68	12	5
52104540	63 x 1.5	50 x 1.5	70	15	5

(23.04.2024)

©2024 Lapp Group - all rights reserved.

<http://lappkorea.lappgroup.com>

data sheet

PN 0456 / 02_03.16